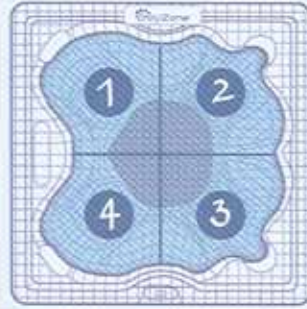


Introducing  MyZone™



1

I want a
deep tissue
massage on my
lower back



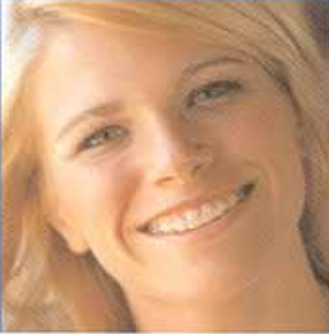
2

I want an
invigorating
massage



3

I want
soothing
waves



4

I want to
have a
conversation



All at the
same time.

A new spa system technology that will make the next level of custom comfort possible.

Create the ultimate spa experience with MyZone.™

MyZone is a revolutionary spa category. It is enabled using Marathon Electric's imPulse motor and an OEM-supplied user interface and spa pack. Together they offer greater possibilities for designing custom comfort features.

Imagine the possibilities.

In zone one, the soothing water flow provides quiet relaxation. In zone two, there is an invigorating hydrotherapy massage. Meanwhile, in zone three the jets pulse in sequence providing a unique total body massage. MyZone's unparalleled control over water pressure means that spa manufacturers can create features that simply don't exist in today's products.

Create Custom Profiles.

Pre-set programming gives a MyZone-equipped spa an ability to simulate a wide range of massage styles: soft, pulsing action; steady, strong kneading action; gradual, rushing action; or just about anything you can imagine. Motor control in conventional spas is typically limited, offering only one or two flow rates. In contrast, a MyZone system can run from full speed to as little as 10% capacity.



Have a conversation in comfort.

The force of rushing water can sometimes be so loud that conversation becomes difficult. The MyZone concept offers a wide range of speeds that allows the spa to run almost silently. Can you actually get a massage AND have a conversation in your spa?

imPulse,™ the new programmable spa motor.

At the heart of the MyZone concept is the new imPulse ECM, which combines the rugged efficiency of a permanent-magnet, brushless-DC motor with the sophisticated capabilities of an onboard control processor that interfaces with a hot tub's control panel. When coupled with our proprietary software, designers can program new and better functionality into the pump motor. The result is a variable-speed system, whose nearly unlimited range of operating speeds, gives it the unprecedented ability to execute programmed commands.



Design with field-proven reliability.

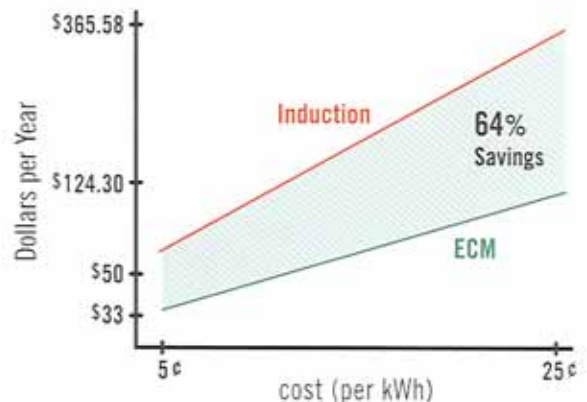
The imPulse motor, the heart of MyZone, is built on a foundation of time-tested variable-speed ECM technology, the same reliable technology used in millions of heating and air-conditioning systems over the past 20 years.

Technical specifications.

Horsepower: 1.8 HP
Speed: 400-4000 RPM
Voltage: 230V
Design: NEMA 56-frame (56Y)
Interface: Digital Serial Interface (DSI) provided by Spa OEM
Bearing System: Ball Bearings
UL-approved
Brushless-DC
Permanent Magnet

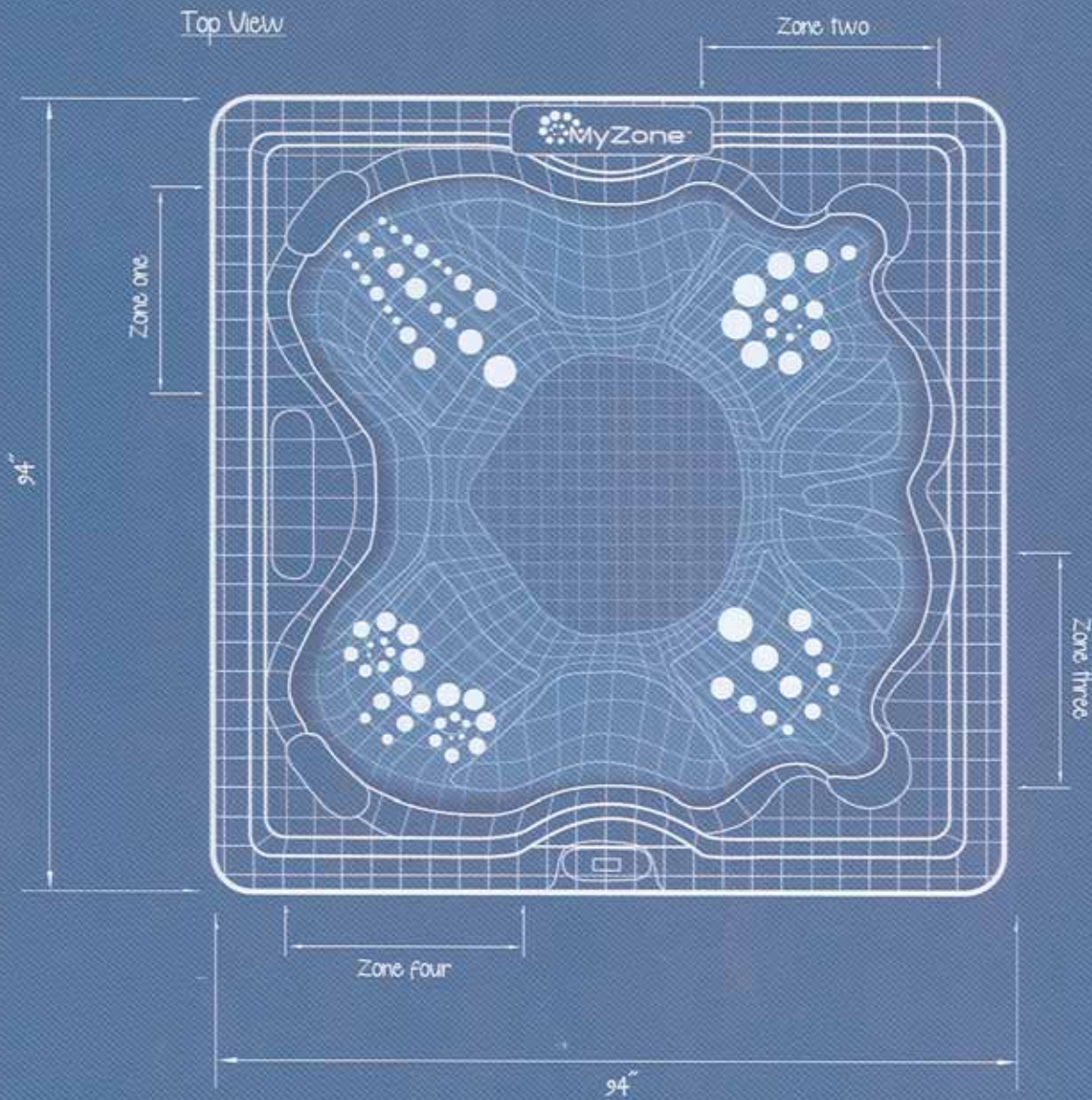
Go green with MyZone.

The programmability of the imPulse pump motor also offers manufacturers the opportunity to eliminate the circulation pump and reduce power consumption by up to 64%.

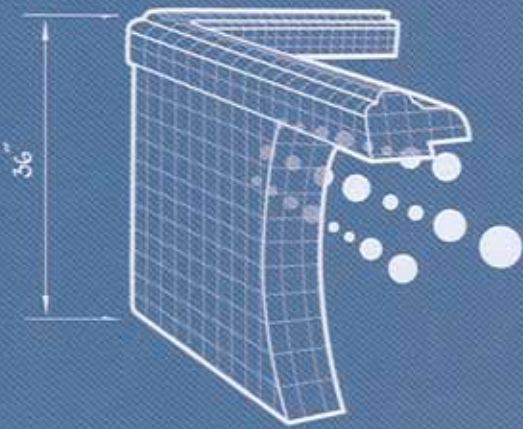


Energy Savings Comparison

MyZone puts water flow at your command



Side View



Project: MyZone Spa System	
Specifications: Zone one: high speed pulse Zone two: high speed swirl Zone three: normal flow Zone four: conversation mode	Company:
Notes: Tested & Proven	
10/07/07	

