

JM Close-Coupled Pump, Single Phase

Dripproof, C-Face with Rigid Base

Applications: Close-coupled pumps where the pump impeller is mounted directly on the motor shaft in environments that are relatively clean and dry.

- Features:**
- NEMA JM pump shaft dimensions
 - Ball bearings, mechanically locked on shaft end
 - Capacitor start design
 - Continuous duty
 - 1.15 Service Factor
 - UL Recognized and CSA Certified



HP	RPM	VOLTS	FRAME	CAT. NO.	MODEL NO.	LIST PRICE	MULT. SYMB.	NOM. EFF.	F.L. AMPS	APPROX. WGT. LBS.	"C" DIM.	FOOT NOTES
1	1800	115/208-230	143JM	Z401	143TCDR5328	\$397	S2	72.0	13.4/6.8-6.7	34	13.62	2
1 1/2	3600	115/208-230	143JM	Z402	-----	\$367	S2	70.0	18.8/9.7-9.4	33	13.12	2
	1800	115/208-230	145JM	Z403	145TCDR5328	\$442	S2	77.0	18.0/9.3-9.0	43	14.62	2
2	3600	115/208-230	145JM	Z404	145TBDR5304	\$445	S2	78.5	19.2/10.5-9.6	36	13.62	1
	1800	115/230	182JM	Z405★	182TCDR7074	\$507	S2	72.0	23.0/11.5	66	16.09	2
3	3600	115/230	182JM	Z406★	182TCDR7318	\$563	S2	74.0	32.0/16.0	61	15.59	2
	1800	115/230	184JM	Z407★	184TCDR7047	\$658	S2	75.5	33.0/16.5	81	17.59	2
5	3600	230	184JM	Z408★	184TCDR7011	\$824	S2	80.0	24.0	93	17.09	2,CF
	1800	230	213JM	Z409★	213TCDW7027	\$904	S2	78.5	28.0	115	19.92	2
7 1/2	3600	230	213JM	Z410★	213TCDW7002	\$1,029	S2	78.5	37.0	106	18.42	2
	1800	230	215JM	Z411★	215TBDW7029	\$1,249	S2	84.0	34.5	120	19.92	1
10	3600	230	215JM	Z412★	215TCDW7002	\$1,324	S2	81.5	47.0	132	19.92	2
	1800	230	215JM	Z413★	215TBDW7027	\$1,514	S2	82.5	44.0	147	21.17	1

★ Stock Model

JM Close-Coupled Pump, Single Phase

Totally Enclosed, C-Face with Rigid Base

Applications: Close-coupled pumps where the pump impeller is mounted directly on the motor shaft in damp, dusty, or dirty environments.

- Features:**
- NEMA JM pump shaft dimensions
 - Ball bearings, mechanically locked on shaft end
 - Capacitor start design
 - Continuous duty
 - 1.0 Service Factor except where footnoted
 - UL Recognized and CSA Certified

HP	RPM	VOLTS	FRAME	CAT. NO.	MODEL NO.	LIST PRICE	MULT. SYMB.	NOM. EFF.	F.L. AMPS	APPROX. WGT. LBS.	"C" DIM.	FOOT NOTES
5	3600	230	184JM	Z433★	184TBFR7315	\$853	S2	80.0	22.4	87	19.75	1
7 1/2	3600	230	213JM	Z434★	213TBFW7010	\$1,145	S2	81.5	32.0	90	20.59	1
10	3600	230	215JM	Z435★	215TBFW7010	\$1,395	S2	85.5	41.5	236	22.09	1,18

★ Stock Model

Footnotes:

- CF Consult Factory for Accessory Kit and/or Modification Selection
- 1 Capacitor Start/Capacitor Run design for reduced amperage
- 2 Capacitor Start Induction Run design
- 18 1.15 Service Factor

JM Close-Coupled Pump, Three Phase

Dripproof, C-Face/Vertical and C-Face with Rigid Base



Applications: Close-coupled pumps where the pump impeller is mounted directly on the motor shaft in environments that are relatively clean and dry.

- Features:**
- NEMA JM pump shaft dimensions
 - JMV frame includes drip cover for vertical mount without base
 - JM frame has rigid base, drip cover not included
 - Ball bearings, mechanically locked on shaft end
 - Continuous duty
 - 1.15 Service Factor
 - UL Recognized and CSA Certified
 - UL Listed for Fire Pump applications except where footnoted



Suitable for use on VFD per guidelines on page ??.

HP	RPM	VOLTS	FRAME	CAT. NO.	MODEL NO.	LIST PRICE	MULT. SYMB.	NOM. EFF.	F.L. AMPS	APPROX. WGT. LBS.	"C" DIM.	FOOT NOTES
1	1800	200	143JM	E115	143TTDR4040	\$329	S2	82.5	3.6	41	14.62	
	1800	200	143JMV	E117	143TTDR4041	\$367	S2	82.5	3.6	40	14.92	27
	1800	208-230/460	143JM	M301★	143TTDR5336	\$263	S2	77.0	3.5-3.6/1.8	30	13.12	
	1800	208-230/460	143JM	M302★	143TTDR5334	\$301	S2	77.0	3.5-3.6/1.8	27	13.42	27
	1800	230/460	143JM	E100	143TTDR4035	\$329	S2	82.5	3.1/1.55	44	14.62	
	1800	230/460	143JMV	E118	143TTDR4034	\$367	S2	82.5	3.1/1.55	40	14.92	27
	1800	575	143JM	E116	143TTDR4047	\$329	S2	82.5	1.1	40	14.62	
	1800	575	143JMV	E119	143TTDR4046	\$367	S2	82.5	1.1	40	14.92	27
1 1/2	3600	200	143JM	E120	143TTDR4016	\$376	S2	82.5	5.5	40	13.12	
	3600	200	143JMV	E122	143TTDR4017	\$414	S2	82.5	5.5	41	12.92	27
	3600	208-230/460	143JM	M303★	143TTDR5309	\$300	S2	80.0	4.9-5.0/2.5	27	13.12	
	3600	208-230/460	143JMV	M304	143TTDR5310	\$339	S2	80.0	4.9-5.0/2.5	35	12.92	27
	3600	230/460	143JM	E123	143TTDR4009	\$376	S2	82.5	4.8/2.4	28	13.12	
	3600	575	143JM	E121	143TTDR4022	\$376	S2	82.5	1.9	28	13.12	
	3600	575	143JMV	E124	143TTDR4024	\$414	S2	82.5	1.9	28	12.92	27
	1800	200	145JM	E125	145TTDR4040	\$359	S2	84.0	5.0	41	14.62	
	1800	200	145JMV	E127	145TTDR4041	\$399	S2	84.0	5.0	39	14.92	27
	1800	208-230/460	145JM	M305★	145TTDR5348	\$287	S2	80.0	4.8-4.8/2.4	31	13.12	
	1800	208-230/460	145JM	M306★	145TTDR5346	\$325	S2	80.0	4.8-4.8/2.4	31	13.42	27
	1800	230/460	145JM	E102	145TTDR4034	\$359	S2	84.0	4.4/2.2	44	14.62	
	1800	230/460	145JMV	E128	145TTDR4035	\$399	S2	84.0	4.4/2.2	39	14.92	27
	1800	575	145JM	E126	145TTDR4072	\$359	S2	84.0	1.8	41	14.62	
	1800	575	145JMV	E129	145TTDR4047	\$399	S2	84.0	1.8	40	14.92	27
	2	3600	200	145JM	E130	145TTDR4015	\$422	S2	84.0	6.2	43	13.12
3600		200	145JMV	E132	145TTDR4016	\$461	S2	84.0	6.2	32	13.42	27
3600		208-230/460	145JM	M307★	145TTDR5313	\$337	S2	80.0	6.4-6.2/3.1	30	13.12	
3600		208-230/460	145JMV	M308★	145TTDR5314	\$376	S2	80.0	6.4-6.2/3.1	35	12.92	27
3600		230/460	145JM	E103	-----	\$422	S2	84.0	5.4/2.7	43	13.12	
3600		230/460	145JMV	E133	145TTDR4010	\$461	S2	84.0	5.4/2.7	44	13.42	27
3600		575	145JM	E131	145TTDR4021	\$422	S2	84.0	2.2	32	13.12	
3600		575	145JMV	E134	145TTDR4022	\$461	S2	84.0	2.2	32	13.42	27
1800		200	145JM	E135	145TTDR4066	\$376	S2	84.0	6.7	45	15.12	
1800		200	145JMV	E137	145TTDR4067	\$414	S2	84.0	6.7	42	15.42	27
1800		208-230/460	145JM	M309★	145TTDR5352	\$300	S2	81.5	6.2-6.2/3.1	38	14.12	
1800		208-230/460	145JM	M310★	145TTDR5350	\$339	S2	81.5	6.2-6.4/3.2	37	14.42	27
1800		230/460	145JM	E104	145TTDR4060	\$376	S2	84.0	5.8/2.9	48	15.12	
1800		230/460	145JMV	E138	145TTDR4051	\$414	S2	84.0	5.8/2.9	44	15.42	27
1800		575	145JM	E136	145TTDR4046	\$376	S2	84.0	2.3	45	15.12	
1800		575	145JMV	E139	145TTDR4073	\$414	S2	84.0	2.3	43	15.42	27

★ Stock Model

Catalog numbers (Cat No.) highlighted in bold blue have efficiency levels that meet or exceed U.S. EPAAct and/or NRCan Canadian standards.

Footnotes:
27 Drip Cover included

Continued on next page.

JM Close-Coupled Pump, Three Phase

Dripproof, C-Face/Vertical and C-Face Rigid Base

PUMP MOTORS

HP	RPM	VOLTS	FRAME	CAT. NO.	MODEL NO.	LIST PRICE	MULT. SYMB.	NOM. EFF.	F.L. AMPS	APPROX. WGT. LBS.	"C" DIM.	FOOT NOTES
3	3600	200	145JM	E140	145TTDR4115	\$472	S2	84.0	10.0	34	13.62	
	3600	200	145JMV	E142	145TTDR4307	\$511	S2	84.0	10.0	34	13.92	27
	3600	208-230/460	145JM	M311 ★	145TTDR5315	\$378	S2	84.0	8.9-8.4/4.2	35	13.62	
	3600	208-230/460	145JM	M312 ★	145TTDR5316	\$417	S2	84.0	8.9-8.4/4.2	39	13.92	27
	3600	230/460	145JM	E105	145TTDR4303	\$472	S2	84.0	8.4/4.2	47	13.62	
	3600	230/460	145JMV	E143	145TTDR4110	\$511	S2	84.0	8.4/4.2	34	13.92	27
	3600	575	145JM	E141	145TTDR4121	\$472	S2	84.0	3.5	34	13.62	
	3600	575	145JMV	E144	145TTDR4025	\$511	S2	84.0	3.5	33	13.92	27
	1800	200	182JM	E145	182TTDR4140	\$438	S2	86.5	9.4	93	17.09	
	1800	200	182JMV	E147	182TTDR4036	\$516	S2	86.5	9.9	78	18.87	27
	1800	208-230/460	182JM	M313 ★	182TTDB7355	\$367	S2	80.0	9.6-10/5.0	58	13.87	DS,98
	1800	208-230/460	182JM	M360 ★	182TTDR5336	\$351	S2	84.0	9.2-8.6/4.3	56	16.59	d
	1800	208-230/460	182JMV	M361 ★	182TTDR5337	\$430	S2	84.0	9.2-8.6/4.3	56	16.94	13,27
	1800	208-230/460	182JMV	M314 ★	182TTDR7350	\$447	S2	81.5	9.4-9.0/4.5	57	17.87	d,27
	1800	208-230/460	182JMV	M1314 ★	182TTDB7350	\$447	S2	81.5	9.4-9.0/4.5	57	17.87	DS,27,98
	1800	230/460	182JM	E106	182TTDR4033	\$438	S2	86.5	9.2/4.6	70	16.09	
	1800	230/460	182JMV	E148	182TTDR4135	\$516	S2	86.5	9.2/4.6	80	18.87	27
	1800	575	182JM	E146	182TTDR4146	\$438	S2	86.5	3.45	89	16.09	
	1800	575	182JMV	E149	182TTDR4147	\$516	S2	86.5	3.45	94	17.18	27
5	3600	200	182JM	E150	182TTDR4116	\$566	S2	86.5	13.8	72	16.09	
	3600	200	182JMV	E152	182TTDR4117	\$642	S2	86.5	13.8	78	16.68	27
	3600	208-230/460	182JM	M362 ★	182TTDR5303	\$453	S2	84.0	13.5-12.4/6.2	60	18.87	13
	3600	208-230/460	182JM	M315 ★	182TTDR7325	\$468	S2	82.5	14.2-13.2/6.6	55	14.82	d,98,CF
	3600	208-230/460	182JM	M1315 ★	182TTDB7325	\$468	S2	82.5	14.2-13.2/6.6	55	14.82	DS,98
	3600	208-230/460	182JMV	M363 ★	182TTDR5304	\$532	S2	84.0	13.5-12.4/6.2	56	16.94	27
	3600	208-230/460	182JMV	M316 ★	182TTDR7601	\$549	S2	82.5	14.2-13.2/6.6	54	19.24	d,27,98,CF
	3600	208-230/460	182JMV	M1316 ★	182TTDB7601	\$549	S2	82.5	14.2-13.2/6.6	54	19.24	DS,27,98
	3600	230/460	182JM	E107 ★	182TTDR4002	\$566	S2	86.5	12.0/6.0	87	16.35	d
	3600	230/460	182JMV	E153	182TTDR4111	\$642	S2	86.5	12.0/6.0	78	18.87	27
	3600	575	182JM	E151	182TTDR4122	\$566	S2	86.5	4.8	79	16.09	
	3600	575	182JMV	E154	182TTDR4123	\$642	S2	86.5	4.8	73	16.68	27
	1800	200	184JM	E155	184TTDR4140	\$566	S2	87.5	15.1	78	16.59	13
	1800	200	184JMV	E157	184TTDR4141	\$642	S2	87.5	14.5	78	19.37	27
	1800	208-230/460	184JM	M317 ★	184TTDB7357	\$453	S2	82.5	14.8-13.4/6.7	70	16.35	98,DS
	1800	208-230/460	184JMV	M318 ★	184TTDB7356	\$532	S2	86.5	16.5-15.4/7.7	65	18.87	27,98,DS
	1800	230/460	184JM	E108	184TTDR4034	\$566	S2	87.5	13.2/6.6	75	17.09	13
	1800	230/460	184JMV	E158	184TTDR4135	\$642	S2	87.5	13.2/6.6	78	17.18	27
	1800	575	184JM	E156	184TTDR4146	\$566	S2	87.5	5.3	89	17.59	13
1800	575	184JMV	E159	184TTDR4147	\$642	S2	87.5	5.2	83	19.37	27	
7 1/2	3600	200	184JM	E160	184TTDR4115	\$680	S2	87.5	20.2	87	17.09	13
	3600	200	184JMV	E162	184TTDR4116	\$758	S2	87.5	20.2	89	19.87	27
	3600	208-230/460	184JM	M319 ★	184TTDR7322	\$543	S2	84.0	19.8-18.4/9.2	68	15.82	d,98,CF
	3600	208-230/460	184JM	M1319 ★	184TTDB7322	\$543	S2	84.0	19.8-18.4/9.2	68	15.82	DS,98
	3600	208-230/460	184JMV	M320 ★	184TTDR7325	\$622	S2	84.0	19.8-18.4/9.2	67	20.24	d,27,98,CF
	3600	208-230/460	184JMV	M1320 ★	184TTDB7325	\$622	S2	84.0	19.8-18.4/9.2	67	20.24	DS,27,98
	3600	230/460	184JM	E109	184TTDR4002	\$680	S2	87.5	17.6/8.8	89	17.09	13
	3600	230/460	184JMV	E163	184TTDR4110	\$758	S2	87.5	17.6/8.8	79	19.87	27
	3600	575	184JM	E161	184TTDR4121	\$680	S2	87.5	7.2	105	17.09	
	3600	575	184JMV	E164	184TTDR4122	\$758	S2	87.5	7.2	106	17.68	27

★ Stock Model

Catalog numbers (Cat No.) highlighted in bold blue have efficiency levels that meet or exceed U.S. EPA and/or NRC Canadian standards.

Footnotes:

- d To be discontinued after current stock is gone
- CF Consult Factory for Accessory Kit and/or Modification Selection
- DS Sourced
- 13 F1 Mounting Only, Cannot reassemble to F2
- 27 Drip Cover included
- 98 Not UL Listed for Fire Pump applications

Continued on next page.

JM Close-Coupled Pump, Three Phase

Dripproof, C-Face/Vertical and C-Face with Rigid Base

HP	RPM	VOLTS	FRAME	CAT. NO.	MODEL NO.	LIST PRICE	MULT. SYMB.	NOM. EFF.	F.L. AMPS	APPROX. WGT. LBS.	"C" DIM.	FOOT NOTES
7 1/2	1800	200	213JM	E165	213TTDW4042	\$638	S2	88.5	22.1	118	19.16	
	1800	200	213JMV	E167	213TTDW4033	\$718	S2	88.5	22.1	96	20.44	27
	1800	208-230/460	213JM	M321★	213TTDBA7047	\$654	S2	87.5	22.0-20.4/10.2	100	17.66	98,DS
	1800	208-230/460	213JMV	M322★	213TTDW7048	\$758	S2	84.0	22.0-21.6/10.8	88	18.94	d,27
	1800	208-230/460	213JMV	M1322★	213TTDBA7048	\$758	S2	84.0	22.0-21.6/10.8	88	18.94	DS,27,98
	1800	230/460	213JM	E110	213TTDW4047	\$818	S2	88.5	19.2/9.6	100	19.16	
	1800	230/460	213JMV	E168	213TTDW4048	\$718	S2	88.5	19.2/9.6	121	20.44	27
	1800	575	213JM	E166	213TTDW4041	\$638	S2	88.5	7.6	120	19.16	
	1800	575	213JMV	E169	213TTDW4038	\$921	S2	88.5	7.7	142	20.44	27
10	3600	200	213JM	E170	213TTDW4009	\$874	S2	88.5	26.9	131	19.16	
	3600	200	213JMV	E172	213TTDW4008	\$976	S2	88.5	26.9	112	20.44	27
	3600	208-230/460	213JM	M323★	213TTDW7022	\$699	S2	85.5	28.0-25.0/12.5	96	17.66	d
	3600	208-230/460	213JM	M1323★	213TTDBA7022	\$699	S2	85.5	28.0-25.0/12.5	96	17.66	DS,98
	3600	208-230/460	213JMV	M324★	213TTDW7023	\$801	S2	85.5	28.0-25.0/12.5	91	18.94	27
	3600	230/460	213JM	E111	213TTDW4022	\$874	S2	88.5	23.4/11.7	135	19.16	
	3600	230/460	213JMV	E173	213TTDW4023	\$976	S2	88.5	23.4/11.7	132	20.44	27
	3600	575	213JM	E171	213TTDW4010	\$874	S2	88.5	9.3	153	19.16	
	3600	575	213JMV	E174	213TTDW4007	\$976	S2	88.5	9.3	125	20.44	27
	1800	200	215JM	E175	215TTDW4041	\$970	S2	89.5	28.7	124	19.16	
	1800	200	215JMV	E177	215TTDW4043	\$1,072	S2	89.5	28.7	128	20.44	27
	1800	208-230/460	215JM	M325★	215TTDBA7047	\$776	S2	88.5	28.4-26.4/13.2	150	19.16	98,DS
	1800	208-230/460	215JMV	M326★	215TTDW7048	\$879	S2	87.5	29.2-26.4/13.2	132	20.44	27
	1800	230/460	215JM	E112★	215TTDW4047	\$970	S2	89.5	25.0/12.5	135	19.16	d
	1800	230/460	215JMV	E178	215TTDW4048	\$1,072	S2	89.5	25.0/12.5	135	20.44	27
	1800	575	215JM	E176	215TTDW4042	\$970	S2	89.5	10.0	125	19.16	
1800	575	215JMV	E179	215TTDW4032	\$1,072	S2	89.5	10.0	118	20.44	27	
15	3600	200	215JM	E180	215TTDW4008	\$1,080	S2	90.2	39.0	128	20.41	13
	3600	200	215JMV	E182	215TTDW4010	\$1,183	S2	90.2	39.0	160	21.69	27
	3600	208-230/460	215JM	M327★	215TTDW7022	\$863	S2	86.5	42.0-38.0/19.0	105	19.16	d
	3600	208-230/460	215JM	M1327★	215TTDBA7022	\$863	S2	86.5	42.0-38.0/19.0	105	19.16	
	3600	208-230/460	215JMV	M328★	215TTDW7023	\$967	S2	86.5	42.0-38.0/19.0	105	20.44	27
	3600	230/460	215JM	E113	215TTDW4022	\$1,080	S2	90.2	34.0/17.0	131	20.41	13
	3600	230/460	215JMV	E183	215TTDW4023	\$1,183	S2	90.2	34.0/17.0	127	21.69	27
	3600	575	215JM	E181	215TTDW4009	\$1,080	S2	90.2	13.6	159	20.41	13
	3600	575	215JMV	E184	215TTDW4007	\$1,183	S2	90.2	13.6	127	21.69	27
	1800	200	254JM	E185	254TTDX4343	\$1,312	S2	91.0	44.0	268	24.17	
	1800	200	254JMV	E187	254TTDX4345	\$1,461	S2	91.0	44.2	263	25.45	27
	1800	208-230/460	254JM	M329★	254TTDX7044	\$1,049	S2	87.5	43.0-39.2/19.6	235	22.42	
	1800	208-230/460	254JMV	M353★	254TTDX7046	\$1,197	S2	87.5	43.0-39.2/19.6	155	23.70	27
	1800	230/460	254JM	E114	-----	\$1,312	S2	91.0	38.4/19.2	200	25.42	
	1800	230/460	254JMV	E188	254TTDX4039	\$1,461	S2	91.0	38.5/19.2	220	25.45	27
	1800	575	254JM	E186	254TTDX4344	\$970	S2	91.0	15.3	200	24.17	
1800	575	254JMV	E189	-----	\$1,072	S2	91.0	15.4	205	25.45	27	
20	3600	200	254JM	E190	254TTDX4007	\$1,080	S2	91.0	53.1	204	24.17	
	3600	200	254JMV	E193	254TTDX4015	\$1,512	S2	91.0	53.1	185	23.70	27
	3600	208-230/460	254JM	M330★	254TTDX7008	\$1,089	S2	88.5	52.6-47.0/23.5	156	22.42	
	3600	208-230/460	254JMV	M354	-----	\$1,238	S2	88.5	52.6-47.0/23.5	155	23.70	27
	3600	230/460	254JM	E191	254TTDX4006	\$1,363	S2	91.0	46.0/23.1	213	22.42	
	3600	230/460	254JMV	E194	254TTDX4020	\$1,512	S2	91.0	46.0/23.1	187	23.70	27
	3600	575	254JM	E192	254TTDX4019	\$1,363	S2	91.0	18.5	225	22.42	
	3600	575	254JMV	E195	254TTDX4024	\$1,512	S2	91.0	18.5	225	23.70	27

★ Stock Model

Catalog numbers (Cat No.) highlighted in bold blue have efficiency levels that meet or exceed U.S. EPA and/or NRC Canadian standards.

Footnotes:

- d To be discontinued after current stock gone
DS Sourced
13 F1 Mounting Only, Cannot reassemble to F2
27 Drip Cover included
98 Not UL Listed for Fire Pump applications

Continued on next page.

JM Close-Coupled Pump, Three Phase

Drip-proof, C-Face/Vertical and C-Face with Rigid Base

HP	RPM	VOLTS	FRAME	CAT. NO.	MODEL NO.	LIST PRICE	MULT. SYMB.	NOM. EFF.	F.L. AMPS	APPROX. WGT. LBS.	"C" DIM.	FOOT NOTES
20	1800	200	256JMV	E199	256TTDX4329	\$1,730	S2	91.0	60.0	235	25.45	27
	1800	208-230/460	256JM	M331★	256TTDX7074	\$1,266	S2	88.5	56.4-53.0/26.5	230	24.17	
	1800	230/460	256JM	E197	256TTDX4075	\$1,583	S2	91.0	52.0/26	128	24.17	
	1800	230/460	256JMV	U100	256TTDX4041	\$1,730	S2	91.0	50.0/25	196	25.45	27
	1800	575	256JM	E198	256TTDX4326	\$1,583	S2	91.0	20.8	238	24.17	
	1800	575	256JMV	U101	256TTDX4047	\$1,730	S2	91.0	20.8	188	25.45	27
25	3600	200	256JM	U102	256TTDX4021	\$1,603	S2	91.0	66.5	225	24.17	
	3600	208-230/460	256JM	M332★	256TTDX7011	\$1,282	S2	89.5	66.0-61.0/30.5	168	24.17	
	3600	230/460	256JM	U103	256TTDX4006	\$1,603	S2	91.0	58.0/29	126	24.17	
	3600	575	256JM	U104	256TTDX4019	\$1,603	S2	91.0	23.2	195	24.17	
	1800	208	284JM	U105	284TTDP4043	\$1,914	S2	91.7	67.5	358	24.31	
	1800	230/460	284JM	M333★	284TTDP7338	\$1,532	S2	87.5	66.0/33.0	330	24.31	
	1800	230/460	284JM	U106	284TTDP4069	\$1,914	S2	91.7	61.0/30.5	360	24.31	
	1800	575	284JM	U107	284TTDP4037	\$1,914	S2	91.0	24.5	349	24.31	
30	3600	200	284JM	U108	284TTDP4025	\$1,954	S2	91.0	83.0	318	24.31	
	3600	230/460	284JM	M334★	284TTDP7605	\$1,562	S2	88.5	73.0/36.5	325	24.31	
	3600	230/460	284JM	U109	-----	\$1,954	S2	91.0	77.0/36.0	318	24.31	
	3600	575	284JM	U110	284TTDP4023	\$1,954	S2	91.0	28.8	315	24.31	
	1800	200	286JM	U111	286TTDP4067	\$2,211	S2	92.4	83.0	410	25.81	
	1800	230/460	286JM	M351★	286TTDP8626	\$1,768	S2	89.5	79.0/39.5	350	25.81	
	1800	230/460	286JM	U112	286TTDP4037	\$2,211	S2	92.4	72.0/36.0	385	25.81	
	1800	575	286JM	U113	286TTDP4047	\$2,211	S2	92.4	28.8	364	25.81	
40	3600	230/460	286JM	M335★	286TTDP7317	\$1,957	S2	88.5	100/50.0	327	25.81	
	3600	230/460	286JM	U114	286TTDP4015	\$2,446	S2	91.7	94.0/47.0	575	25.81	
	3600	575	286JM	U115	286TTDP4021	\$2,446	S2	91.7	38.0	386	25.81	
	1800	230/460	324JM	M352★	324TTDP8631	\$2,311	S2	89.5	106/53.0	385	26.25	
	1800	230/460	324JM	U116	324TTDP4345	\$2,889	S2	93.0	97.0/48.5	340	26.25	
	1800	575	324JM	U117	324TTDP4349	\$2,888	S2	93.0	39.0	491	26.25	
50	3600	230/460	324JM	U118	324TTDP4004	\$3,129	S2	92.4	117/58.5	460	26.25	
	3600	230/460	324JM	M358★	324TTDP7320	\$2,668	S2	89.5	124/62.0	433	26.25	
	3600	575	324JM	U119	324TTDP4018	\$3,129	S2	92.4	47.0	437	26.25	
	1800	230/460	326JM	U120	326TTDP4329	\$3,337	S2	93.0	123/61.5	525	27.75	
	1800	575	326JM	U121	326TTDP4326	\$3,337	S2	93.0	47.5	504	27.75	

Blue shaded areas are Cast Iron Frames

 ★ **Stock Model**

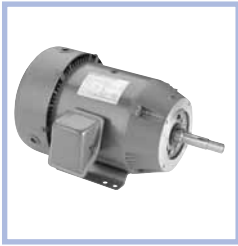
Catalog numbers (Cat No.) highlighted in bold blue have efficiency levels that meet or exceed U.S. EPA and/or NRC Canadian standards.

Footnotes:

27 Drip Cover included

JM Close-Coupled Pump, Three Phase

Totally Enclosed, C- Face with Rigid Base



Applications: Close-coupled pumps where the pump impeller is mounted directly on the motor shaft in damp, dusty, or dirty environments.

- Features:**
- NEMA JM pump shaft dimensions
 - Ball bearings, mechanically locked on shaft end
 - Continuous duty
 - 1.15 Service Factor
 - UL Recognized and CSA Certified



Suitable for use on VFD per guidelines on page ??.

HP	RPM	VOLTS	FRAME	CAT. NO.	MODEL NO.	LIST PRICE	MULT. SYMB.	NOM. EFF.	F.L. AMPS	APPROX. WGT. LBS.	"C" DIM.	FOOT NOTES
1	1800	200	143JM	U300	143TTFR4040	\$408	S2	82.5	3.5	37	15.00	
	1800	208-230/460	143JM	M401★	143TTFR5332	\$328	S2	77.0	3.5-3.6/1.8	31	14.50	
	1800	230/460	143JM	U301	143TTFR4034	\$408	S2	82.5	3.0/1.5	35	15.00	
	1800	575	143JM	U302	143TTFR4046	\$408	S2	82.5	1.2	41	15.00	
1 1/2	3600	200	143JM	U303	143TTFR4015	\$480	S2	82.5	4.6	41	15.00	
	3600	208-230/460	143JM	M415	143TTFR5303	\$384	S2	80.0	4.7-4.6/2.3	30	14.50	
	3600	230/460	143JM	U304	143TTFR4007	\$480	S2	82.5	4.0/2.0	41	15.00	
	3600	575	143JM	U305	143TTFR4021	\$480	S2	82.5	1.6	41	15.00	
	1800	200	145JM	U306	145TTFR4048	\$447	S2	84.0	5.1	45	16.50	
	1800	208-230/460	145JM	M402★	145TTFR5336	\$358	S2	80.0	4.8-4.8/2.4	33	14.50	
	1800	230/460	145JM	U307	145TTFR4045	\$447	S2	84.0	4.4/2.2	46	16.50	
	1800	575	145JM	U308	145TTFR4054	\$447	S2	84.0	1.8	45	16.50	
2	3600	200	145JM	U309	145TTFR4017	\$520	S2	84.0	6.0	47	15.50	
	3600	208-230/460	145JM	M403★	145TTFR5303	\$414	S2	80.0	6.0-6.0/3.0	33	14.50	
	3600	230/460	145JM	U310	145TTFR4011	\$520	S2	84.0	5.2/2.6	47	15.50	
	3600	575	145JM	U311	145TTFR4023	\$520	S2	84.0	2.1	39	15.50	
	1800	200	145JM	U312	145TTFR4050	\$468	S2	84.0	6.4	48	16.00	
	1800	208-230/460	145JM	M404★	145TTFR5338	\$375	S2	82.5	6.0-5.8/2.9	43	16.00	
	1800	230/460	145JM	U313	145TTFR4044	\$468	S2	84.0	5.6/2.8	47	16.00	
	1800	575	145JM	U314	145TTFR4128	\$468	S2	84.0	2.2	47	16.00	
3	3600	200	182JM	U315	182TTFR4015	\$596	S2	85.5	8.5	77	17.35	
	3600	208-230/460	145JM	M418★	145TTFR5310	\$426	S2	84.0	8.4-7.6/3.8	43	15.50	
	3600	208-230/460	182JM	M405★	182TTFR5302	\$476	S2	84.0	8.4-7.6/3.8	49	16.47	
	3600	230/460	182JM	U316	182TTFR4009	\$596	S2	85.5	7.4/3.7	89	17.35	
	3600	575	182JM	U317	182TTFR4021	\$596	S2	85.5	2.95	81	17.35	
	1800	208-230/460	182JM	M422★	182TTFR5330	\$436	S2	85.5	9.2-8.6/4.3	58	17.97	
	1800	208-230/460	182JM	M406	182TTFR7757	\$453	S2	82.5	9.0-8.4/4.2	65	17.35	
	1800	230/460	182JM	U319	182TTFR4044	\$545	S2	87.5	8.4/4.2	77	17.85	
	1800	575	182JM	U320	182TTFR4056	\$545	S2	87.5	3.35	79	18.35	
5	3600	230/460	184JM	M423★	184TTFR5302	\$567	S2	84.0	13.4-12.6/6.3	62	17.97	98,17
	3600	208-230/460	184JM	M407★	184TTFR7908	\$584	S2	85.5	13.6-12.4/6.2	77	15.69	CF
	3600	230/460	184JM	U322	184TTFR4009	\$708	S2	87.5	12.4/6.2	118	18.35	
	3600	575	184JM	U323	184TTFR4021	\$708	S2	87.5	4.9	82	18.35	
	1800	208-230/460	184JM	M408★	184TTFR7760	\$567	S2	84.0	14.4-13.2/6.6	81	19.35	
	1800	230/460	184JM	U325	184TTFR4042	\$708	S2	87.5	12.6/6.3	82	18.85	
	1800	575	184JM	U326	184TTFR4056	\$708	S2	87.5	5.2	89	18.85	
7 1/2	3600	200	213JM	U327	213TTFW4009	\$883	S2	88.5	21.1	125	22.09	
	3600	208-230/460	184JM	M416★	184TTFR8915	\$624	S2	85.5	20.0-19.0/9.5	86	18.85	
	3600	208-230/460	213JM	M409★	213TTFW7022	\$705	S2	84.0	21.2-19.2/9.6	98	20.59	
	3600	230/460	213JM	U329	213TTFW4022	\$883	S2	88.5	18.4/9.2	148	22.09	
	3600	575	213JM	U331	213TTFW4010	\$883	S2	88.5	7.3	147	22.09	
	1800	208-230/460	213JM	M410★	213TTFW7047	\$807	S2	87.5	22.0-19.4/9.7	106	20.59	
	1800	230/460	213JM	U334	213TTFW4047	\$1,009	S2	89.5	20.0/10.0	131	20.59	
	1800	575	213JM	U335	213TTFW4038	\$1,009	S2	89.5	8.0	225	20.59	

★ Stock Model

Catalog numbers (Cat No.) highlighted in bold blue have efficiency levels that meet or exceed U.S. EPA and/or NRC Canadian standards.

Footnotes:

- CF Consult Factor for Accessory Kit and/or Modification Selection
- 17 1.0 Service Factor
- 98 Not UL Listed for Fire Pump applications

Continued on next page.

JM Close-Coupled Pump, Three Phase

Totally Enclosed, C-Face with Rigid Base

PUMP MOTORS

HP	RPM	VOLTS	FRAME	CAT. NO.	MODEL NO.	LIST PRICE	MULT. SYMB.	NOM. EFF.	F.L. AMPS	APPROX. WGT. LBS.	"C" DIM.	FOOT NOTES
10	3600	200	215JM	U336	215TTFW4014	\$1,080	S2	89.5	27.6	128	22.09	
	3600	208-230/460	215JM	M411★	215TTFW7303	\$863	S2	86.5	27.0-24.0/12.0	143	22.09	
	3600	230/460	215JM	U337	215TTFW4022	\$1,080	S2	89.5	24.0/12.0	142	22.09	
	3600	575	215JM	U338	215TTFW4015	\$1,080	S2	89.5	9.6	158	22.09	
	1800	200	215JM	U339	215TTFW4035	\$1,207	S2	89.5	29.9	130	22.09	
	1800	208-230/460	215JM	M412★	215TTFW7047	\$964	S2	88.5	28.0-25.0/12.5	140	22.09	
	1800	230/460	215JM	U340	215TTFW4047	\$1,207	S2	89.5	25.6/12.8	135	22.09	
	1800	575	215JM	U341	215TTFW4036	\$1,207	S2	89.5	10.4	128	22.09	
15	3600	208-230/460	215JM	M417★	215TTFW7022	\$1,028	S2	88.5	40.0-37.0/18.5	143	22.09	
	3600	208-230/460	254JM	M413★	254TTFL5004	\$1,080	S2	85.5	41.0-36.0/18.0	170	26.49	AL
	3600	230/460	254JM	U344	254TTFL4006	\$1,350	S2	91.0	35.0/17.5	138	24.74	AL
	3600	575	254JM	U346	254TTFL4010	\$1,350	S2	90.2	14.0	195	24.74	AL
	1800	200	254JM	U347	254TTFL4034	\$1,637	S2	91.0	46.0	225	24.74	AL
	1800	208-230/460	254JM	M420★	254TTFL5751	\$1,309	S2	88.5	43.0-38.5/19.3	197	26.49	AL
	1800	230/460	254JM	U348	254TTFL4031	\$1,637	S2	91.0	40.0/20.0	224	24.74	AL
	1800	575	254JM	U349	254TTFL4036	\$1,637	S2	91.0	16.0	220	24.74	AL
20	3600	200	256JM	U350	256TTFL4010	\$1,817	S2	90.2	54.1	185	26.49	AL
	3600	230/460	256JM	M414★	256TTFL5023	\$1,454	S2	88.5	49.6/24.8	185	26.49	AL
	3600	230/460	256JM	U351	256TTFL4006	\$1,817	S2	90.2	47.0/23.5	185	26.49	AL
	3600	575	256JM	U352	256TTFL4012	\$1,817	S2	90.2	18.8	185	26.49	AL
	1800	200	256JM	U353	256TTFL4036	\$1,987	S2	91.0	58.7	232	28.49	AL
	1800	230/460	256JM	U354	256TTFL4031	\$1,987	S2	91.0	51.0/25.5	247	28.49	AL
	1800	230/460	256JM	M421★	256TTFL5055	\$1,589	S2	88.5	52.0/26.0	232	26.49	AL
	1800	575	256JM	U355	256TTFL4038	\$1,987	S2	91.0	20.4	232	28.49	AL

★ Stock Model

Catalog numbers (Cat No.) highlighted in bold blue have efficiency levels that meet or exceed U.S. EPA and/or NRC Canadian standards.

Footnotes:

AL Aluminum Frame Construction

JP Close-Coupled Pump, Single Phase

Dripproof, C-Face with Rigid Base



Applications: Close-coupled pumps where the pump impeller is mounted directly on the motor shaft in environments that are relatively clean and dry.

- Features:**
- NEMA JP pump shaft dimensions
 - Ball bearings, mechanically locked on shaft end
 - Capacitor start design
 - Continuous duty
 - 1.15 Service Factor
 - UL Recognized and CSA Certified

HP	RPM	VOLTS	FRAME	CAT. NO.	MODEL NO.	LIST PRICE	MULT. SYMB.	NOM. EFF.	F.L. AMPS	APPROX. WGT. LBS.	"C" DIM.	FOOT NOTES
1	1800	115/208-230	143JP	Z420	143TCDR5330	\$367	S2	72.0	13.4/6.8-6.7	35	16.68	2,95
1 1/2	3600	115/208-230	143JP	Z421	-----	\$367	S2	75.5	17.4/9.0-8.7	33	16.18	2,95
	1800	115/208-230	145JP	Z422	145TCDR5329	\$442	S2	77.0	18.6/9.9-9.3	43	17.68	2,95
2	3600	115/208-230	145JP	Z423	-----	\$445	S2	78.5	19.2/10.5-9.6	40	16.68	1,95
	1800	115/230	182JP	Z424	182TCDR7354	\$563	S2	72.0	23.0/11.5	78	19.15	2,95
3	3600	115/230	182JP	Z425	182TCDR8005	\$563	S2	74.0	32.0/16.0	87	18.65	2,95
	1800	115/230	184JP	Z426	184TCDR7626	\$658	S2	75.5	33.0/16.5	94	20.65	2,95
5	3600	230	184JP	Z427*	184TCDR7909	\$824	S2	80.0	24.0	86	20.15	2,95
	1800	230	213JP	Z428	213TCDW7028	\$904	S2	78.5	28.0	130	23.79	2,95
7 1/2	3600	230	213JP	Z429*	213TCDW7003	\$1,029	S2	78.5	37.0	118	22.29	2,95
	1800	230	215JP	Z430	215TBDW7045	\$1,249	S2	84.0	34.5	132	23.79	1,95
10	3600	230	215JP	Z431*	215TCDW7004	\$1,324	S2	81.5	47.0	135	23.79	2,95
	1800	230	215JP	Z432	215TBDW7030	\$1,514	S2	82.5	44.0	325	25.04	1,95

* Stock Model

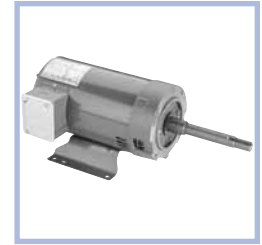
Footnotes:

- 1 Capacitor Start/Capacitor Run design for reduced amperage
 2 Capacitor Start Induction Run design
 95 Will not accept drip cover kit

JP Close-Coupled Pump, Three Phase

Dripproof, C-Face/Vertical and C-Face with Rigid Base

Applications: Close-coupled pumps where the pump impeller is mounted directly on the motor shaft in environments that are relatively clean and dry.



- Features:**
- NEMA JP pump shaft dimensions
 - JPV frame includes drip cover for vertical mount without base
 - JP frame has rigid base, drip cover not included
 - Ball bearings, mechanically locked on shaft end
 - Continuous duty
 - 1.15 Service Factor
 - UL Recognized and CSA Certified
 - UL Listed for Fire Pump applications except where footnoted



Suitable for use on VFD per guidelines on page 14.

HP	RPM	VOLTS	FRAME	CAT. NO.	MODEL NO.	LIST PRICE	MULT. SYMB.	NOM. EFF.	F.L. AMPS	APPROX. WGT. LBS.	"C" DIM.	FOOT NOTES
1	1800	200	143JP	U122	143TTDR4042	\$329	S2	82.5	3.6	40	17.68	
	1800	200	143JPV	U125	143TTDR4043	\$367	S2	82.5	3.6	41	17.98	27
	1800	208-230/460	143JP	M101	143TTDR5338	\$263	S2	77.0	3.5-3.6/1.8	32	16.18	
	1800	208-230/460	143JPV	M102	143TTDR5337	\$301	S2	77.0	3.5-3.6/1.8	28	16.48	27
	1800	230/460	143JP	U123	143TTDR4036	\$329	S2	82.5	3.1/1.55	40	17.68	
	1800	230/460	143JPV	U126	143TTDR4037	\$367	S2	82.5	3.1/1.55	41	17.98	27
	1800	575	143JP	U124	143TTDR4048	\$329	S2	82.5	1.1	42	17.68	
	1800	575	143JPV	U127	143TTDR4049	\$367	S2	82.5	1.1	41	17.98	27
1 1/2	3600	200	143JP	U128	143TTDR4018	\$376	S2	82.5	5.5	40	16.18	
	3600	200	143JPV	U131	143TTDR4019	\$414	S2	82.5	5.5	41	15.98	27
	3600	208-230/460	143JP	M103	143TTDR5307	\$300	S2	80.0	4.9-5.0/2.5	30	16.18	
	3600	208-230/460	143JPV	M104	-----	\$339	S2	80.0	4.9-5.0/2.5	28	15.98	27
	3600	230/460	143JP	U129	143TTDR4010	\$376	S2	82.5	4.8/2.4	40	16.18	
	3600	230/460	143JPV	U132	143TTDR4011	\$414	S2	82.5	4.8/2.4	41	15.98	27
	3600	575	143JP	U130	143TTDR4023	\$376	S2	82.5	1.9	40	16.18	
	3600	575	143JPV	U133	143TTDR4025	\$414	S2	82.5	1.9	41	15.98	27
	1800	200	145JP	U134	145TTDR4042	\$359	S2	84.0	5.0	44	17.68	
	1800	200	145JPV	U137	145TTDR4043	\$399	S2	84.0	5.0	47	17.98	27
	1800	208-230/460	145JP	M105★	145TTDR5354	\$287	S2	80.0	4.8-4.8/2.4	33	16.18	
	1800	208-230/460	145JPV	M106	-----	\$325	S2	80.0	4.8-4.8/2.4	33	16.48	27
	1800	230/460	145JP	U135	145TTDR4061	\$359	S2	84.0	4.4/2.2	44	17.68	
	1800	230/460	145JPV	U138	145TTDR4037	\$399	S2	84.0	4.4/2.2	41	17.98	27
	1800	575	145JP	U136	145TTDR4048	\$359	S2	84.0	1.8	42	17.68	
	1800	575	145JPV	U139	145TTDR4049	\$399	S2	84.0	1.8	45	17.98	27
2	3600	200	145JP	U140	145TTDR4017	\$339	S2	84.0	6.2	43	16.18	
	3600	200	145JPV	U143	145TTDR4018	\$461	S2	84.0	6.2	44	16.48	27
	3600	208-230/460	145JP	M107	-----	\$337	S2	80.0	6.4-6.2/3.1	35	16.18	
	3600	208-230/460	145JPV	M108	-----	\$376	S2	80.0	6.4-6.2/3.1	34	15.98	27
	3600	230/460	145JP	U141	145TTDR4011	\$422	S2	84.0	5.4/2.7	43	16.18	
	3600	230/460	145JPV	U144	145TTDR4012	\$461	S2	84.0	5.4/2.7	44	16.48	27
	3600	575	145JP	U142	145TTDR4023	\$422	S2	84.0	2.2	34	16.18	
	3600	575	145JPV	U145	145TTDR4024	\$461	S2	84.0	2.2	44	16.48	27
	1800	200	145JP	U146	145TTDR4068	\$376	S2	84.0	6.7	45	18.18	
	1800	200	145JPV	U149	145TTDR4069	\$414	S2	84.0	6.7	45	18.48	27
	1800	208-230/460	145JP	M109★	145TTDR5356	\$300	S2	81.5	6.2-6.2/3.1	35	17.18	
	1800	208-230/460	145JP	M110	145TTDR5355	\$339	S2	81.5	6.2-6.2/3.1	37	17.48	27
	1800	230/460	145JP	U147	145TTDR4036	\$376	S2	84.0	5.8/2.9	45	18.18	
	1800	230/460	145JPV	U150	145TTDR4062	\$414	S2	84.0	5.8/2.9	44	18.48	27
	1800	575	145JP	U148	145TTDR4074	\$376	S2	84.0	2.3	45	18.18	
	1800	575	145JPV	U151	145TTDR4075	\$414	S2	84.0	2.3	44	18.48	27

★ Stock Model

Catalog numbers (Cat No.) highlighted in bold blue have efficiency levels that meet or exceed U.S. EPA and/or NRC Canadian standards.

Footnotes:
27 Drip Cover included

Continued on next page.

JP Close-Coupled Pump, Three Phase

Drip-proof, C-Face/Vertical and C-Face with Rigid Base

HP	RPM	VOLTS	FRAME	CAT. NO.	MODEL NO.	LIST PRICE	MULT. SYMB.	NOM. EFF.	F.L. AMPS	APPROX. WGT. LBS.	"C" DIM.	FOOT NOTES
3	3600	200	145JP	U152	145TTDR4117	\$472	S2	84.0	10.0	47	16.68	
	3600	200	145JPV	U155	145TTDR4118	\$511	S2	84.0	10.0	48	16.98	27
	3600	208-230/460	145JP	M111*	145TTDR5319	\$378	S2	84.0	8.9-8.4/4.2	35	16.68	
	3600	208-230/460	145JPV	M112	-----	\$417	S2	84.0	8.9-8.4/4.2	36	16.98	27
	3600	230/460	145JP	U153	145TTDR4111	\$472	S2	84.0	8.4/4.2	36	16.68	
	3600	230/460	145JPV	U156	145TTDR4112	\$511	S2	84.0	8.4/4.2	48	16.98	27
	3600	575	145JP	U154	145TTDR4123	\$472	S2	84.0	3.5	47	16.68	
	3600	575	145JPV	U157	145TTDR4124	\$511	S2	84.0	3.5	48	16.98	27
	1800	200	182JP	U158	182TTDR4142	\$438	S2	86.5	9.4	93	19.66	
	1800	200	182JPV	U161	182TTDR4143	\$516	S2	86.5	9.4	94	19.91	27
	1800	208-230/460	182JP	M113	182TTDR7356	\$367	S2	81.5	9.2-9.0/4.5	74	18.41	
	1800	208-230/460	182JP	M170*	182TTDR5338	\$351	S2	84.0	9.2-8.6/4.3	57	19.65	13
	1800	208-230/460	182JPV	M171	182TTDR5339	\$430	S2	84.0	9.2-8.6/4.3	59	20.00	13,27
	1800	230/460	182JP	U159	182TTDR4136	\$438	S2	86.5	8.2/4.1	93	19.91	
	1800	230/460	182JPV	U162	182TTDR4048	\$516	S2	86.5	8.6/4.3	102	19.84	27
	1800	575	182JP	U160	182TTDR4148	\$438	S2	86.5	3.45	93	19.66	
	1800	575	182JPV	U163	182TTDR4149	\$516	S2	86.5	3.45	94	19.91	27
	5	3600	200	182JP	U164	182TTDR4118	\$566	S2	86.5	13.8	108	19.16
3600		200	182JPV	U167	182TTDR4119	\$642	S2	86.5	13.8	109	19.84	27
3600		208-230/460	182JP	M172*	182TTDR5305	\$453	S2	88.5	13.5-12.4/6.2	62	19.65	13
3600		208-230/460	182JP	M114*	182TTDR7605	\$468	S2	82.5	15.0-14.0/7.0	81	18.41	
3600		208-230/460	182JPV	M173	-----	\$532	S2	82.5	13.5-12.4/6	73	18.98	13,27
3600		230/460	182JP	U165	182TTDR4811	\$566	S2	86.5	12.0/6.0	108	19.65	
3600		230/460	182JPV	U168	182TTDR4113	\$642	S2	86.5	12.0/6.0	85	19.84	13,27
3600		575	182JP	U166	182TTDR4124	\$566	S2	86.5	4.8	56	19.16	13
3600		575	182JPV	U169	182TTDR4125	\$642	S2	86.5	4.8	109	19.84	27
1800		200	184JP	U170	184TTDR4142	\$566	S2	87.5	14.5	84	20.41	13
1800		200	184JPV	U173	184TTDR4143	\$642	S2	87.5	14.5	116	20.84	27
1800		208-230/460	184JP	M115*	184TTDR7358	\$453	S2	82.5	14.4-14.2/7.1	74	17.38	98,CF
1800		208-230/460	184JPV	M163	184TTDR8039	\$532	S2	82.5	14.5-13.4/6.7	87	19.84	27,98
1800		230/460	184JP	U171	184TTDR4136	\$566	S2	87.5	12.6/6.3	115	20.41	
1800		230/460	184JPV	U174	-----	\$642	S2	87.5	12.6/6.3	116	20.84	27
1800		575	184JP	U172	184TTDR4148	\$566	S2	87.5	5.3	69	20.16	13
1800		575	184JPV	U175	184TTDR4149	\$642	S2	87.5	5.0	116	20.84	27
7 1/2		3600	200	184JP	U176	184TTDR4117	\$680	S2	87.5	20.7	105	20.16
	3600	200	184JPV	U179	184TTDR4118	\$758	S2	87.5	20.2	106	20.84	27
	3600	208-230/460	184JP	M116*	184TTDR7604	\$543	S2	84.5	21.0-19.4/9.7	70	19.41	98
	3600	208-230/460	184JPV	M164	-----	\$622	S2	84.5	21.0-19.4/9.7	89	19.84	27,98
	3600	230/460	184JP	U177	184TTDR4111	\$680	S2	87.5	18.0/9.0	105	20.41	13
	3600	230/460	184JPV	U180	184TTDR4112	\$758	S2	87.5	17.6/8.8	106	20.32	27
	3600	575	184JP	U178	184TTDR4123	\$680	S2	87.5	7.2	105	20.16	
	3600	575	184JPV	U181	184TTDR4124	\$758	S2	87.5	7.2	106	20.32	27
	1800	200	213JP	U182	213TTDW4044	\$818	S2	88.5	22.1	137	23.03	
	1800	200	213JPV	U185	213TTDW4051	\$921	S2	88.5	22.1	123	24.31	27
	1800	208-230/460	213JP	M117*	213TTDW7049	\$654	S2	84.0	22.0-21.6/10.8	111	21.53	
	1800	208-230/460	213JP	M165	213TTDW7050	\$758	S2	84.0	22.0-21.6/10.8	123	22.81	27
	1800	230/460	213JP	U183	213TTDW4049	\$818	S2	88.5	19.2/9.6	141	23.03	
	1800	230/460	213JPV	U186	213TTDW4037	\$921	S2	88.5	19.4/9.2	142	23.03	27
	1800	575	213JP	U184	213TTDW4039	\$818	S2	88.5	7.6	140	23.03	
	1800	575	213JPV	U187	213TTDW4052	\$921	S2	88.5	7.7	142	24.31	27

* Stock Model

Catalog numbers (Cat No.) highlighted in bold blue have efficiency levels that meet or exceed U.S. EPA and/or NRC Canadian standards.

Footnotes:

- CF Consult Factory for Accessory Kit and/or Modification Selection
- 13 F1 Mounting Only, Cannot reassemble to F2
- 27 Drip Cover included
- 98 Not UL Listed

Continued on next page.

JP Close-Coupled Pump, Three Phase

Drip-proof, C-Face/Vertical and C-Face with Rigid Base

PUMP MOTORS

HP	RPM	VOLTS	FRAME	CAT. NO.	MODEL NO.	LIST PRICE	MULT. SYMB.	NOM. EFF.	F.L. AMPS	APPROX. WGT. LBS.	"C" DIM.	FOOT NOTES
10	3600	200	213JP	U188	213TTDW4011	\$874	S2	88.5	26.9	140	23.03	
	3600	200	213JPV	U191	213TTDW4013	\$976	S2	88.5	26.9	142	24.31	27
	3600	208-230/460	213JP	M118★	213TTDW7024	\$699	S2	85.5	28.0-25.0/12.5	100	21.53	
	3600	208-230/460	213JPV	M166	213TTDW7025	\$801	S2	85.5	27.6-25.0/12.5	128	22.81	27
	3600	230/460	213JP	U189	213TTDW4024	\$874	S2	88.5	23.4/11.7	140	23.03	
	3600	230/460	213JPV	U192	213TTDW4025	\$976	S2	88.5	23.4/11.7	142	24.31	27
	3600	575	213JP	U190	213TTDW4012	\$874	S2	88.5	9.4	140	23.03	
	3600	575	213JPV	U193	213TTDW4014	\$976	S2	88.5	9.3	130	24.31	27
	1800	200	215JP	U194	215TTDW4044	\$970	S2	89.5	28.8	148	23.03	
	1800	200	215JPV	U197	215TTDW4053	\$1,072	S2	89.5	28.8	163	24.31	27
	1800	208-230/460	215JP	M119★	215TTDW7049	\$776	S2	87.5	29.0-26.4/13.2	115	23.03	
	1800	208-230/460	215JPV	M167	215TTDW7050	\$879	S2	87.5	29.2-26.4/13.2	141	24.31	27
	1800	230/460	215JP	U195	215TTDW4049	\$970	S2	89.5	25.0/12.5	148	23.03	
	1800	230/460	215JPV	U198	215TTDW4050	\$1,072	S2	89.5	25.0/12.5	225	24.31	27
	1800	575	215JP	U196	215TTDW4051	\$970	S2	89.5	10.0	135	23.03	
	1800	575	215JPV	U199	215TTDW4052	\$1,072	S2	89.0	10.0	150	24.31	27
15	3600	200	215JP	U200	215TTDW4011	\$1,080	S2	90.2	39.0	170	24.28	
	3600	200	215JPV	U203	215TTDW4013	\$1,183	S2	90.2	39.1	172	25.56	27
	3600	208-230/460	215JP	M120★	215TTDW7024	\$863	S2	86.5	42.0-38.0/19.0	117	23.03	
	3600	208-230/460	215JPV	M168	215TTDW7025	\$967	S2	86.5	42.0-38.0/19.0	129	24.31	27
	3600	230/460	215JP	U201	215TTDW4024	\$1,080	S2	90.2	34.0/17.0	220	24.28	
	3600	230/460	215JPV	U204	215TTDW4025	\$1,183	S2	90.2	34.0/17.0	135	25.56	27
	3600	575	215JP	U202	215TTDW4012	\$1,080	S2	90.2	13.6	168	24.28	
	3600	575	215JPV	U205	215TTDW4014	\$1,183	S2	90.2	13.6	215	25.56	27
	1800	200	254JP	U206	254TTDX4074	\$1,312	S2	91.0	44.0	220	27.04	
	1800	200	254JPV	U209	254TTDX4060	\$1,461	S2	91.0	44.0	198	28.33	27
	1800	208-230/460	254JP	M121★	254TTDX7042	\$1,049	S2	87.5	43.0-39.2/19.6	158	25.29	
	1800	208-230/460	254JPV	M122★	254TTDX7043	\$1,197	S2	87.5	43.0-39.2/19.6	174	26.58	27
	1800	230/460	254JP	U207	254TTDX4075	\$1,312	S2	91.0	38.5/19.2	214	27.04	
	1800	230/460	254JPV	U210	254TTDX4041	\$1,461	S2	91.0	38.5/19.2	224	28.33	27
	1800	575	254JP	U208	254TTDX4340	\$1,312	S2	91.0	15.4	260	27.04	
	1800	575	254JPV	U211	254TTDX4341	\$1,461	S2	91.0	15.4	220	28.33	27
20	3600	200	254JP	U212	254TTDX4014	\$1,363	S2	91.0	53.1	200	25.29	
	3600	200	254JPV	U215	254TTDX4010	\$1,512	S2	91.0	53.1	200	26.58	27
	3600	208-230/460	254JP	M123★	254TTDX7007	\$1,089	S2	88.5	52.6-47.0/23.5	210	25.29	
	3600	208-230/460	254JPV	M169	-----	\$1,238	S2	88.5	52.6-47.0/23.5	158	26.58	27
	3600	230/460	254JP	U213	254TTDX4017	\$1,363	S2	91.0	46.0/23.1	235	25.29	
	3600	230/460	254JPV	U216	254TTDX4012	\$1,512	S2	91.0	46.0/23.1	150	26.58	27
	3600	575	254JP	U214	254TTDX4008	\$1,363	S2	91.0	18.0	203	25.29	
	3600	575	254JPV	U217	254TTDX4016	\$1,512	S2	91.0	18.5	200	26.58	27
	1800	200	256JP	U218	256TTDX4064	\$1,583	S2	91.0	60.0	225	27.04	
	1800	200	256JPV	U221	256TTDX4065	\$1,730	S2	91.0	59.8	240	28.33	27
	1800	208-230/460	256JP	M124★	256TTDX7054	\$1,266	S2	88.5	56.4-52.8/26.4	250	27.04	
	1800	230/460	256JP	U219	256TTDX4063	\$1,583	S2	91.0	52.0/26.0	328	27.04	
	1800	230/460	256JPV	U222	-----	\$1,730	S2	91.0	52.0/26.0	240	28.33	27
	1800	575	256JP	U220	256TTDX4328	\$1,583	S2	91.0	20.8	236	27.04	
1800	575	256JPV	U223	256TTDX4059	\$1,730	S2	91.0	20.8	220	28.33	27	
25	3600	200	256JP	U224	256TTDX4022	\$1,603	S2	91.0	66.7	235	27.04	
	3600	208-230/460	256JP	M125★	256TTDX7009	\$1,282	S2	89.5	66.0-61.0/30.5	270	27.04	
	3600	230/460	256JP	U225	256TTDX4004	\$1,603	S2	91.0	58.0/29.0	185	27.04	
	3600	575	256JP	U226	256TTDX4023	\$1,603	S2	91.0	23.2	255	27.04	

★ Stock Model

Catalog numbers (Cat No.) highlighted in bold blue have efficiency levels that meet or exceed U.S. EPA and/or NRC Canadian standards.

Continued on next page.

Footnotes:
27 Drip Cover included

JP Close-Coupled Pump, Three Phase

Dripproof, C-Face/Vertical and C-Face with Rigid Base

HP	RPM	VOLTS	FRAME	CAT. NO.	MODEL NO.	LIST PRICE	MULT. SYMB.	NOM. EFF.	F.L. AMPS	APPROX. WGT. LBS.	"C" DIM.	FOOT NOTES
25	1800	200	284JP	U227	284TTDP4044	\$1,914	S2	91.7	70.0	420	27.18	
	1800	230/460	284JP	M126★	284TTDP7072	\$1,532	S2	87.5	66.0/33.0	306	27.18	
	1800	230/460	284JP	U228	284TTDP4058	\$1,914	S2	91.7	61.0/30.5	349	27.18	
	1800	575	284JP	U229	284TTDP4045	\$1,914	S2	91.7	24.5	348	27.18	
30	3600	200	284JP	U230	284TTDP4011	\$1,954	S2	91.0	83.0	361	27.18	
	3600	230/460	284JP	M127★	284TTDP7302	\$1,562	S2	88.5	73.0/36.5	305	27.18	
	3600	230/460	284JP	U231	284TTDP4022	\$1,954	S2	91.0	72.0/36.0	368	27.18	
	3600	575	284JP	U232	284TTDP4012	\$1,954	S2	91.0	29.0	428	27.18	
	1800	200	286JP	U233	286TTDP4048	\$2,211	S2	92.4	83.0	330	28.68	
	1800	230/460	286JP	M128★	286TTDP7054	\$1,729	S2	89.5	79.0/39.5	324	28.68	
	1800	230/460	286JP	U234	286TTDP4074	\$2,211	S2	92.4	72.0/36.0	364	28.68	
	1800	575	286JP	U235	286TTDP4049	\$2,211	S2	92.4	28.8	364	28.68	
40	3600	230/460	286JP	M129★	286TTDP7018	\$1,957	S2	88.5	100/50.0	324	28.68	
	3600	230/460	286JP	U236	286TTDP4020	\$2,446	S2	91.7	94.0/47.0	428	28.68	
	3600	575	286JP	U237	286TTDP4024	\$2,446	S2	91.7	38.0	327	28.68	
	1800	230/460	324JP	U238	324TTDP4348	\$2,889	S2	93.0	97.0/48.5	487	29.12	
	1800	230/460	324JP	M130★	324TTDP7073	\$2,311	S2	89.5	106/53.0	563	29.12	
	1800	575	324JP	U239	324TTDP4033	\$2,889	S2	93.0	39.0	491	29.12	
50	3600	230/460	324JP	M133★	324TTDP8610	\$2,504	S2	89.5	124/62.0	562	29.12	
	3600	230/460	324JP	U240	324TTDP4002	\$3,129	S2	92.4	117/58.5	478	29.12	
	3600	575	324JP	U241	324TTDP4011	\$3,149	S2	92.4	47.0	437	29.12	
	1800	230/460	326JP	M131★	326TTDP7330	\$2,668	S2	90.2	130/65.0	475	30.62	
	1800	230/460	326JP	U242	326TTDP4340	\$3,337	S2	93.0	123/61.5	585	30.62	
	1800	575	326JP	U243	326TTDP4032	\$3,337	S2	93.0	49.0	490	30.62	

Blue shaded areas are Cast Iron Frames

★ Stock Model

Catalog numbers (Cat No.) highlighted in bold blue have efficiency levels that meet or exceed U.S. EPA and/or NRC Canadian standards.

JP Close-Coupled Pump, Three Phase

Totally Enclosed, C-Face with Rigid Base



Applications: Close-coupled pumps where the pump impeller is mounted directly on the motor shaft in damp, dusty, or dirty environments.

- Features:**
- More ratings available, contact Marathon for price and availability
 - NEMA JP pump shaft dimensions
 - Ball bearings, mechanically locked on shaft end
 - Continuous duty
 - 1.15 Service Factor
 - UL Recognized and CSA Certified



Suitable for use on VFD per guidelines on page 19.

HP	RPM	VOLTS	FRAME	CAT. NO.	MODEL NO.	LIST PRICE	MULT. SYMB.	NOM. EFF.	F.L. AMPS	APPROX. WGT. LBS.	"C" DIM.	FOOT NOTES
7 1/2	3600	200	213JP	U328	213TTFW4011	\$883	S2	89.5	21.2	85	25.96	
	3600	208-230/460	184JP	M216★	184TTFR8914	\$624	S2	85.5	20.0-19.0/9.5	84	21.91	
	3600	230/460	213JP	U330	213TTFW4024	\$883	S2	89.5	18.4/9.2	153	24.46	
	3600	575	213JP	U332	213TTFW4012	\$883	S2	89.5	7.4	85	25.96	
15	3600	200	254JP	U343	254TTFL4009	\$1,350	S2	91.0	40.3	259	27.60	AL
	3600	208-230/460	215JP	M217★	215TTFW7024	\$1,028	S2	88.5	40.0-37.0/18.5	187	25.96	
	3600	208-230/460	254JP	M213★	254TTFL5003	\$1,080	S2	85.5	41.0-36.0/18.0	188	27.60	AL
	3600	230/460	254JP	U345	254TTFL4007	\$1,350	S2	91.0	35.0/17.5	259	27.60	AL
	3600	575	254JP	U356	254TTFL4011	\$1,350	S2	91.0	14.0	259	27.60	AL

★ Stock Model

Catalog numbers (Cat No.) highlighted in bold blue have efficiency levels that meet or exceed U.S. EPA and/or NRC Canadian standards.

Footnotes:
AL Aluminum Frame Construction

Continued on next page.

Swimming Pool Pump, Single Phase

Dripproof, C-Face

Applications: For use on commercial pool pump systems.

- Features:**
- UL "1081" Design
 - NEMA pool motor Service Factors
 - External ground lugs
 - Double sealed ball bearings
 - PSC design
 - Fixed CW rotation, viewed opposite shaft end
 - Automatic reset thermal protector
 - Class F insulation
 - 50 degrees C ambient
 - 56C = Keyed shaft, shaft slinger, C-face round body
 - 56J = Threaded shaft, shaft slinger, C-face round body
 - 304 stainless steel shaft on all models
 - UL Recognized and CSA Certified



HP	RPM	VOLTS	FRAME	CAT NO.	MODEL NO.	LIST PRICE	MULT. SYMB.	SERVICE FACTOR	F.L. AMPS	APPROX. WGT. LBS.	"AG" DIM.	FOOT NOTES
1/2	3600	115/230	56C	J070 *	56A34DB11011	\$211	F1	1.95	11.6/5.8	24	9.69	d,DS
	3600	115/230	56J	J071 *	56A34DB11001	\$211	F1	1.95	11.6/5.8	26	9.69	d,DS
3/4	3600	115/230	56C	J072 *	56A34DB11004	\$251	F1	1.95	13.0/6.5	25	9.69	DS
	3600	115/230	56J	J073 *	56A34DB11013	\$251	F1	1.95	13.0/6.5	25	9.69	DS
1	3600	115/230	56C	J074 *	56A34DB11003	\$278	F1	1.5	13.0/6.5	32	10.67	DS
	3600	115/230	56J	J075 *	56A34DB11012	\$278	F1	1.5	13.0/6.5	32	10.67	DS
1 1/2	3600	230	56C	J076 *	56A34DB11002	\$331	F1	1.4	8.8	38	11.65	d,DS
	3600	230	56J	J077 *	56A34DB11014	\$331	F1	1.4	8.8	38	11.65	DS
2	3600	230	56C	J078 *	56A34DB11015	\$396	F1	1.15	9.5	38	11.65	d,DS
	3600	230	56J	J079 *	56A34DB11010	\$396	F1	1.15	9.5	38	11.65	DS

* Stock Model

Swimming Pool Pump, Single Phase

Dripproof, Square Flange

Applications: For use on commercial pool pump systems.

- Features:**
- UL "1081" Design
 - NEMA pool motor Service Factors
 - External ground lugs
 - Double sealed ball bearings
 - PSC design
 - Fixed CW rotation, viewed opposite shaft end
 - Automatic reset thermal protector
 - Class F insulation
 - 50 degrees C ambient
 - 56Y = Threaded shaft, shaft slinger, special square flange mount
 - 304 stainless steel shaft on all models
 - UL Recognized and CSA Certified



HP	RPM	VOLTS	FRAME	CAT NO.	MODEL NO.	LIST PRICE	MULT. SYMB.	SERVICE FACTOR	F.L. AMPS	APPROX. WGT. LBS.	"AG" DIM.	FOOT NOTES
1/2	3600	115/230	56Y	J080	56A34DB11009	\$211	F1	1.95	11.6/5.8	24	9.69	DS
3/4	3600	115/230	56Y	J081 *	56A34DB11008	\$251	F1	1.95	13.0/6.5	25	9.69	DS
1	3600	115/230	56Y	J082 *	56A34DB11007	\$278	F1	1.5	13.0/6.5	32	10.67	DS
1 1/2	3600	230	56Y	J083 *	56A34DB11006	\$331	F1	1.4	8.8	38	11.65	DS
2	3600	230	56Y	J084 *	56A34DB11005	\$396	F1	1.15	9.5	38	11.65	DS

* Stock Model

Footnotes:

d To be discontinued after current stock is gone
 DS Sourced

Jet Pump, Single Phase

Dripproof, C-Face



Applications: Commercial and industrial water pumps and water systems.

Features:

- Jet Pump Service Factors
- Double sealed ball bearings, mechanically locked on shaft end
- Capacitor start design for high starting torque
- Fixed CW rotation, viewed opposite shaft end
- Automatic reset thermal protector
- 56C = carbon steel shaft with key, drip cover not included, see Accessories Section
- 56J = 416 stainless steel threaded shaft with slinger, drip cover included
- UL Recognized and CSA Certified

HP	RPM	VOLTS	FRAME	CAT NO.	MODEL NO.	LIST PRICE	MULT. SYMB.	SERVICE FACTOR	F.L. AMPS	APPROX. WGT. LBS.	"C" DIM.	FOOT NOTES
1/3	3600	115/208-230	56C	J025 *	56C34D2111	\$143	F1	1.75	5.6/2.7-2.8	15	10.44	2
	3600	115/208-230	56J	J033 *	56C34D2110	\$151	F1	1.75	5.6/2.7-2.8	8	11.13	2
1/2	3600	115/208-230	56C	J009 *	56C34D2097	\$157	F1	1.6	7.4/3.5-3.7	17	10.69	2
	3600	115/208-230	56J	J034 *	56C34D2096	\$164	F1	1.6	7.4/3.5-3.7	16	11.38	2
3/4	3600	115/208-230	56C	J013 *	56C34D2103	\$184	F1	1.5	9.8/4.8-4.9	19	10.94	2
	3600	115/208-230	56J	J035 *	56C34D2102	\$192	F1	1.5	9.8/4.8-4.9	20	11.63	2
1	3600	115/208-230	56C	J017 *	56C34D1173	\$207	F1	1.4	12.0/6.2-6.0	23	11.94	2
	3600	115/208-230	56J	J036 *	56C34D1172	\$213	F1	1.4	12.0/6.2-6.0	24	12.44	2
1 1/2	3600	115/208-230	56C	J019 *	56B34D2025	\$283	F1	1.3	13.4/7.4-6.7	26	11.97	1
	3600	115/208-230	56J	J037 *	56B34D2024	\$300	F1	1.3	13.4/7.4-6.7	26	12.43	1
2	3600	115/208-230	56C	J021 *	56B34D5325	\$351	F1	1.2	18.2/9.8-9.1	32	11.44	1
	3600	115/208-230	56J	J038 *	56B34D5326	\$368	F1	1.2	18.2/9.8-9.1	33	12.24	1
3	3600	230	56C	J023 *	56B34D5327	\$557	F1	1.15	12.7	38	11.94	1
	3600	230	56J	J039 *	56B34D5328	\$587	F1	1.15	12.7	37	12.44	1

* Stock Model

Jet Pump, Single Phase

Dripproof, 56J C-Face with Rigid Base



Applications: Commercial and industrial water pumps and water systems.

Features:

- Jet Pump Service Factors
- Double sealed ball bearings, mechanically locked on shaft end
- Capacitor start design for high starting torque
- Fixed CW rotation, viewed opposite shaft end
- Automatic reset thermal protection
- 416 Stainless steel threaded shaft with slinger
- Drip cover included
- UL Recognized and CSA Certified

HP	RPM	VOLTS	FRAME	CAT. NO.	MODEL NO.	LIST PRICE	MULT. SYMB.	SERVICE FACTOR	F.L. AMPS	APPROX. WGT. LBS.	"C" DIM.	FOOT NOTES
1/3	3600	115/208-230	56J	J054 *	56C34D2118	\$155	F1	1.75	5.6/2.7-2.8	15	10.94	2
1/2	3600	115/208-230	56J	J055 *	56C34D2119	\$168	F1	1.6	7.4/3.5-3.7	17	11.19	2
3/4	3600	115/208-230	56J	J056 *	56C34D2120	\$196	F1	1.5	9.8/4.8-4.9	20	11.44	2
1	3600	115/208-230	56J	J057 *	56C34D2121	\$218	F1	1.4	12.0/6.2-6.0	23	12.44	2
1 1/2	3600	115/208-230	56J	J058 *	56B34D2033	\$304	F1	1.3	13.4/7.4-6.7	23	12.43	1
2	3600	115/208-230	56J	J059 *	56B34D5341	\$374	F1	1.2	18.2/9.8-9.1	39	11.94	1

* Stock Model

Footnotes:

- 1 Capacitor Start/Capacitor Run design for reduced amperage
- 2 Capacitor Start Induction Run design

Jet Pump, Three Phase

Dripproof, C-Face

Applications: Commercial and industrial centrifugal or hydraulic pumps, water pumps and water systems. May also be used on industrial compressors requiring NEMA C-Face mount.

- Features:**
- Jet Pump Service Factors
 - Continuous duty
 - Nameplated 60/50 hertz, 190/380 volts at next lower HP
 - Double sealed ball bearings, mechanically locked on shaft end
 - 56C = carbon steel shaft with key
 - 56J = 416 stainless steel threaded shaft with slinger
 - UL Recognized and CSA Certified
 - Drip cover not included, see Accessories section



HP	RPM	VOLTS	FRAME	CAT NO.	MODEL NO.	LIST PRICE	MULT. SYMB.	SERVICE FACTOR	F.L. AMPS	APPROX. WGT. LBS.	"C" DIM.
1/3	3600	208-230/460	56C	P001 *	56T34D5310	\$166	F1	1.75	1.2-1.1/55	19	9.94
	3600	208-230/460	56J	J040 *	56T34D5347	\$166	F1	1.75	1.2-1.1/55	18	10.44
1/2	3600	208-230/460	56C	P002 *	56T34D5311	\$188	F1	1.6	2.1-2.2/1.1	19	10.44
	3600	208-230/460	56J	J041 *	56T34D5348	\$188	F1	1.6	2.1-2.2/1.1	20	10.94
3/4	3600	208-230/460	56C	P003 *	56T34D5312	\$226	F1	1.5	3.0-3.2/1.6	20	10.44
	3600	208-230/460	56J	J042 *	56T34D5349	\$226	F1	1.5	3.0-3.2/1.6	21	10.94
1	3600	208-230/460	56C	P004 *	56T34D5313	\$257	F1	1.4	3.7-3.7/1.85	23	10.44
	3600	208-230/460	56J	J043 *	56T34D5350	\$257	F1	1.4	3.7-3.7/1.85	22	10.94
1 1/2	3600	208-230/460	56C	P005 *	56T34D5314	\$313	F1	1.3	4.9-5.0/2.5	22	10.44
	3600	208-230/460	56J	J044 *	56T34D5351	\$313	F1	1.3	4.9-5.0/2.5	22	10.94
2	3600	208-230/460	56C	P006 *	56T34D5315	\$367	F1	1.2	6.4-6.2/3.1	24	10.44
	3600	208-230/460	56J	J045 *	56T34D5352	\$367	F1	1.2	6.4-6.2/3.1	25	10.94
3	3600	208-230/460	56C	P007 *	56T34D5316	\$412	F1	1.15	8.9-8.4/4.2	34	11.44
	3600	208-230/460	56J	J046 *	56T34D5353	\$412	F1	1.15	8.9-8.4/4.2	31	11.94

★ Stock Model

Jet Pump, Three Phase

Dripproof, 56J C-Face with Rigid Base

Applications: Commercial and industrial centrifugal or hydraulic pumps, water pumps and water systems.

- Features:**
- Jet Pump Service Factors
 - Continuous duty
 - Nameplated 60/50 hertz, 190/380 volts at next lower HP
 - Double sealed ball bearings, mechanically locked on shaft end
 - 416 stainless steel threaded shaft with slinger
 - Drip cover included
 - UL Recognized and CSA Certified



HP	RPM	VOLTS	FRAME	CAT NO.	MODEL NO.	LIST PRICE	MULT. SYMB.	SERVICE FACTOR	F.L. AMPS	APPROX. WGT. LBS.	"C" DIM.
1/3	3600	208-230/460	56J	J047	56T34D5368	\$170	F1	1.75	1.2-1.1/55	21	10.43
1/2	3600	208-230/460	56J	J048 *	56T34D5367	\$192	F1	1.6	2.1-2.2/1.1	21	10.93
3/4	3600	208-230/460	56J	J049 *	56T34D5365	\$230	F1	1.5	3.0-3.2/1.6	22	10.93
1	3600	208-230/460	56J	J050 *	56T34D5366	\$261	F1	1.4	3.7-3.7/1.85	25	10.93
1 1/2	3600	208-230/460	56J	J051 *	56T34D5369	\$317	F1	1.3	4.9-5.0/2.5	29	10.93
2	3600	208-230/460	56J	J052 *	56T34D5370	\$371	F1	1.2	6.4-6.2/3.1	30	10.93
3	3600	208-230/460	56J	J053 *	56T34D5371	\$416	F1	1.15	8.9-8.4/4.2	33	11.93

★ Stock Model

Jet Pump, Three Phase

Totally Enclosed, 56C C-Face



Applications: Commercial and industrial centrifugal or hydraulic pumps, water pumps and water systems. May also be used on industrial compressors requiring NEMA C-Face mount.

- Features:**
- Double sealed ball bearings, mechanically locked on shaft end
 - Continuous duty
 - Nameplated 60/50 hertz, 190/380 volts at next lower HP
 - 1.15 Service Factor
 - UL Recognized and CSA Certified
 - Drip cover not included, see Accessories section

HP	RPM	VOLTS	FRAME	CAT NO.	MODEL NO.	LIST PRICE	MULT. SYMB.	SERVICE FACTOR	F.L. AMPS	APPROX. WGT. LBS.	"C" DIM.	FOOT NOTES
1/3	3600	208-230/460	56C	P101★	56T34T5306	\$192	F1	1.35	1.7-2.0/1.0	19	9.94	N
1/2	3600	208-230/460	56C	P102★	56T34F5321	\$213	F1	1.15	2.1-2.2/1.1	22	11.82	
3/4	3600	208-230/460	56C	P103★	56T34F5322	\$253	F1	1.15	3.0-3.2/1.6	22	11.82	
1	3600	208-230/460	56C	P104★	56T34F5323	\$283	F1	1.15	3.7-3.7/1.85	24	11.82	
1 1/2	3600	208-230/460	56C	P105★	56T34F5324	\$329	F1	1.15	4.6/2.3	25	11.82	
2	3600	208-230/460	56C	P106★	56T34F5325	\$382	F1	1.15	6.0-6.0/3.0	29	12.32	
3	3600	208-230/460	56C	P107★	56T34F5326	\$414	F1	1.15	8.4-7.6/3.8	39	13.32	

★ Stock Model

Jet Pump, Three Phase

Totally Enclosed, 56J C-Face with Removable Rigid Base



Applications: Commercial and industrial centrifugal or hydraulic pumps, water pumps and water systems.

- Features:**
- Double sealed ball bearings, mechanically locked on shaft end
 - Continuous duty
 - Nameplated 60/50 hertz, 190/380 volts at next lower HP
 - 1.15 Service Factor
 - 416 Stainless steel threaded shaft with slinger
 - UL Recognized and CSA Certified

HP	RPM	VOLTS	FRAME	CAT NO.	MODEL NO.	LIST PRICE	MULT. SYMB.	SERVICE FACTOR	F.L. AMPS	APPROX. WGT. LBS.	"C" DIM.	FOOT NOTES
1/3	3600	208-230/460	56J	J060	56T34T5308	\$209	F1	1.15	1.7-2.0/1.0	21	10.44	N
1/2	3600	208-230/460	56J	J061★	56T34F5342	\$230	F1	1.15	2.1-2.2/1.1	23	12.32	
3/4	3600	208-230/460	56J	J062★	56T34F5343	\$270	F1	1.15	3.0-3.2/1.6	26	12.32	
1	3600	208-230/460	56J	J063★	56T34F5344	\$300	F1	1.15	3.7-3.7/1.85	27	12.32	
1 1/2	3600	208-230/460	56J	J064★	56T34F5345	\$361	F1	1.15	4.7-4.6/2.3	28	12.32	
2	3600	208-230/460	56J	J065★	56T34F5346	\$414	F1	1.15	6.0-6.0/3.0	32	12.82	
3	3600	208-230/460	56J	J066★	56T34F5347	\$472	F1	1.15	8.4-7.6/3.8	42	13.82	

★ Stock Model

Footnotes:

N Totally Enclosed, Non-Ventilated

Fire Pump, Three Phase

Dripproof, Rigid Base

Applications: For use on pumps designed for fire pump duty and installed per NFPA-20. These Dripproof motors are intended for installation in relatively clean and dry environments.

- Features:**
- Ball bearings
 - 1.15 Service Factor
 - Red paint on 25 HP through 200 HP
 - NEMA Design B, Code G or less
 - Dual voltage motors have 12 leads, suitable for wye-delta or across the line start on either voltage, or part winding start on low voltage
 - Single voltage motors have 12 leads and are suitable for wye-delta, across the line, or part winding start
 - Will accept C- Face kits, see Accessories section
 - UL Listed, CSA Certified and CE Marked
 - 230/460 and 460 Volt models rated for 50 HZ at next lower HP, 1.15 SF



HP	RPM	VOLTS	FRAME	CAT. NO.	MODEL NO.	LIST PRICE	MULT. SYMB.	NOM. EFF.	F.L. AMPS	APPROX. WGT. LBS.	"C" DIM.	FOOT NOTES
25	3600	200/400	256T	U501	256TTDX4020	\$1,628	E2	91.0	66.5/33.5	126	22.32	
	3600	200/400	256T	Y621	256TTDX8522	\$1,321	E2	89.5	70.0/35.0	225	22.32	
	3600	230/460	256T	U500	256TTDX4024	\$1,628	E2	91.0	58.0/29.0	164	22.32	20
	1800	200/400	284T	U503	284TTDP4047	\$1,612	E2	91.7	70/35.0	420	23.49	
	1800	200/400	284T	Y623	284TTDP8629	\$1,307	E2	88.5	76.0/38.0	250	23.49	
	1800	230/460	284T	U502	284TTDP4027	\$1,612	E2	91.7	61.0/30.5	423	23.49	20
30	3600	200/400	284TS	U505	-----	\$1,942	E2	91.0	82.8/41.4	318	22.06	
	3600	200/400	284TS	Y625	284TSTDP8618	\$1,500	E2	88.5	84.0/42.0	247	22.06	
	3600	230/460	284TS	Y624	284TSTDP8621	\$1,500	E2	88.5	73.0/36.5	345	22.06	d,20
	3600	230/460	284TS	U504	284TSTDP4002	\$1,942	E2	91.0	72.0/36.0	460	22.06	20
	1800	200/400	286T	Y627	286TTDP8371	\$1,526	E2	89.5	91.0/45.5	332	24.99	
	1800	200/400	286T	U507	-----	\$1,875	E2	92.4	82.8/41.4	364	24.99	
40	1800	230/460	286T	U506 *	286TTDP4041	\$1,875	E2	92.4	72.0/36.0	331	24.99	20
	3600	200/400	286TS	Y629*	286TSTDP8608	\$2,042	E2	88.5	115/57.5	358	23.56	
	3600	200/400	286TS	U509	286TSTDP4023	\$2,486	E2	91.7	108/54.0	360	23.56	
	3600	230/460	286TS	U508 *	286TSTDP4022	\$2,486	E2	91.7	94.0/47.0	339	23.56	20
	1800	200/400	324T	U511	-----	\$2,332	E2	93.0	112/55.8	465	26.00	
	1800	200/400	324T	Y631	324TTDP8630	\$1,903	E2	89.5	122/61.0	579	26.00	
50	1800	230/460	324T	U510 *	324TTDP4038	\$2,332	E2	93.0	97.0/48.5	465	26.00	20
	3600	200/400	324TS	Y633*	324TSTDP8607	\$2,517	E2	89.5	143/71.5	548	24.50	
	3600	200/400	324TS	U513	324TSTDP4007	\$2,954	E2	92.4	135/67.5	415	24.50	
	3600	230/460	324TS	U512 *	324TSTDP4010	\$2,954	E2	92.4	117/58.5	425	24.50	20
	1800	200/400	326T	U515 *	326TTDP4344	\$2,718	E2	93.0	141/70.5	515	27.50	
	1800	200/400	326T	Y635	326TTDP8268	\$2,221	E2	90.2	150/75.0	425	27.50	
60	1800	230/460	326T	U514	326TTDP4345	\$2,718	E2	93.0	123/61.5	345	27.50	20
	3600	200/400	326TS	Y637*	326TSTDP8219	\$3,016	E2	90.2	167/83.5	465	26.00	
	3600	200/400	326TS	U517	326TSTDP4022	\$3,359	E2	93.0	155/77.5	340	26.00	
	3600	230/460	326TS	U516 *	326TSTDP4024	\$3,359	E2	93.0	135/67.5	468	26.00	20
	1800	200/400	326TS	Y663	326TSTDP8929	\$2,657	E2	91.7	177/88.5	460	26.00	
	1800	200/400	364T	Y641	364TTDS8274	\$2,875	E2	91.0	176/88.0	625	28.62	
	1800	200/400	364T	U521	-----	\$3,425	E2	93.6	166/83.0	805	28.62	
	1800	200/400	364TS	U519	364TSTDS4337	\$3,425	E2	93.6	166/83.0	699	26.50	
	1800	200/400	364TS	Y639	364TSTDS8328	\$2,875	E2	91.0	177/88.5	625	26.50	
	1800	230/460	364T	U520	364TTDS4328	\$3,425	E2	93.6	144/72.0	716	28.62	20
75	1800	230/460	364TS	U518 *	364TSTDS4332	\$3,425	E2	93.6	144/72.0	805	26.50	20
	3600	200/400	364TS	U523	364TSTDS4024	\$4,604	E2	93.0	210/105	713	26.50	
	3600	200/400	364TS	Y643*	364TSTDS8503	\$4,021	E2	90.2	212/106	630	26.50	

Blue shaded areas are Cast Iron Frames

* Stock Model

Catalog numbers (Cat No.) highlighted in bold blue have efficiency levels that meet or exceed U.S. EPCAC and/or NRCAN Canadian standards.

Footnotes:

- d To be discontinued after current stock is gone
- 20 Rated 60/50 hertz, 190/380 or 380 volt at next lower horsepower

Continued on next page.

Fire Pump, Three Phase

Dripproof, Rigid Base

HP	RPM	VOLTS	FRAME	CAT. NO.	MODEL NO.	LIST PRICE	MULT. SYMB.	NOM. EFF.	F.L. AMPS	APPROX. WGT. LBS.	"C" DIM.	FOOT NOTES
75	3600	230/460	364TS	U522 *	364TSTDS4025	\$4,604	E2	93.0	183/91.5	950	26.50	20
	1800	200/400	365TS	Y645	365TSTDS8637	\$3,657	E2	91.7	214/107	660	27.50	
	1800	200/400	365TS	U525	365TSTDS4347	\$4,172	E2	94.1	204/102	766	27.50	
	1800	230/460	365TS	U524 *	365TSTDS4332	\$4,172	E2	94.1	177/88.5	772	27.50	20
100	3600	200/400	365TS	U527 *	365TSTDS4303	\$6,047	E2	93.0	276/138	730	27.50	
	3600	200/400	365TS	Y647*	365TSTDS7904	\$5,528	E2	91.7	274/137	691	27.50	
	3600	230/460	365TS	U526 *	365TSTDS4025	\$6,047	E2	93.0	240/120	721	27.50	20
	1800	200/400	404TS	U529 *	404TSTDS4333	\$5,402	E2	94.1	271/136	1065	29.50	
	1800	200/400	404TS	Y649	404TSTDS8561	\$4,712	E2	93.0	274/137	850	29.50	
	1800	230/460	404TS	U528 *	404TSTDS4332	\$5,321	E2	94.1	236/118	1002	29.50	20
125	3600	200/400	404TS	Y651*	404TSTDS7623	\$6,800	E2	92.4	322/161	910	29.50	
	3600	200/400	404TS	U531	404TSTDS14008	\$7,523	E2	93.6	327/163	949	29.50	
	3600	230/460	404TS	U530 *	404TSTDS4017	\$7,523	E2	93.6	284/142	914	29.50	20
	1800	200/400	405TS	U533	405TSTDS4333	\$6,371	E2	94.5	336/168	1070	31.00	
	1800	230/460	405TS	U532 *	405TSTDS4332	\$6,371	E2	94.5	292/146	925	31.00	20
150	3600	460	405TS	U534 *	405TSTDS4006	\$9,152	E2	93.6	169	983	31.00	20
	1800	460	444TS	U535 *	444TSTDS4332	\$9,201	E2	95.0	173	1265	34.00	20
200	3600	460	444TS	U536 *	444TSTDS4010	\$14,236	E2	94.5	225	1315	34.00	20
	1800	460	445TS	U537 *	445TSTDS4332	\$11,624	E2	95.0	233	1412	36.00	20
250	3600	460	445TS	Y658*	445TSTDS7303	\$13,858	E2	93.6	275	1387	36.00	20
	1800	460	445TS	Y659*	445TSTDS7936	\$11,991	E2	95.0	287	1428	36.00	20
300	3600	460	447TS	H178*	447TSTDN7001	\$15,826	E6	95.0	332	2255	39.50	F,20,25
	1800	460	447TS	H812*	447TSTDN7026	\$12,932	E6	95.4	345	1952	39.50	F,20,25
350	3600	460	447TS	H193*	447TSTDN7003	\$18,128	E6	95.0	385	2068	39.50	F,20,25
	1800	460	447TS	H813*	447TSTDN7027	\$14,278	E6	95.4	400	1950	39.50	F,20,25
400	3600	460	447TS	H817*	447TSTDN7005	\$20,626	E6	95.4	440	2150	39.50	F,20,25
	1800	460	447TS	H814*	447TSTDN7028	\$15,153	E6	95.4	450	2214	39.50	F,20,25
450	3600	460	449TS	H818*	449TSTDN7001	\$21,030	E6	95.8	495	2544	44.50	F,TS,20,25
	1800	460	449TS	H815	449TSTDN7026	\$15,851	E6	95.4	510	2554	44.50	F,TS,20,25
500	3600	460	449TS	H819*	449TSTDN7003	\$22,862	E6	95.8	545	2542	44.50	F,TS,20,25
	1800	460	449TS	H816	449TSTDN7027	\$17,076	E6	95.8	560	2695	44.50	F,TS,20,25

Blue shaded areas are Cast Iron Frames

★ Stock Model

Catalog numbers (Cat No.) highlighted in bold blue have efficiency levels that meet or exceed U.S. EPA and/or NRC Canadian standards.

Footnotes:

- F Class F Insulation
- TS Normally Closed Thermostats installed
- 20 Rated 60/50 hertz, 190/380 or 380 volt at next lower horsepower
- 25 Motor will NOT accept C-Face kit